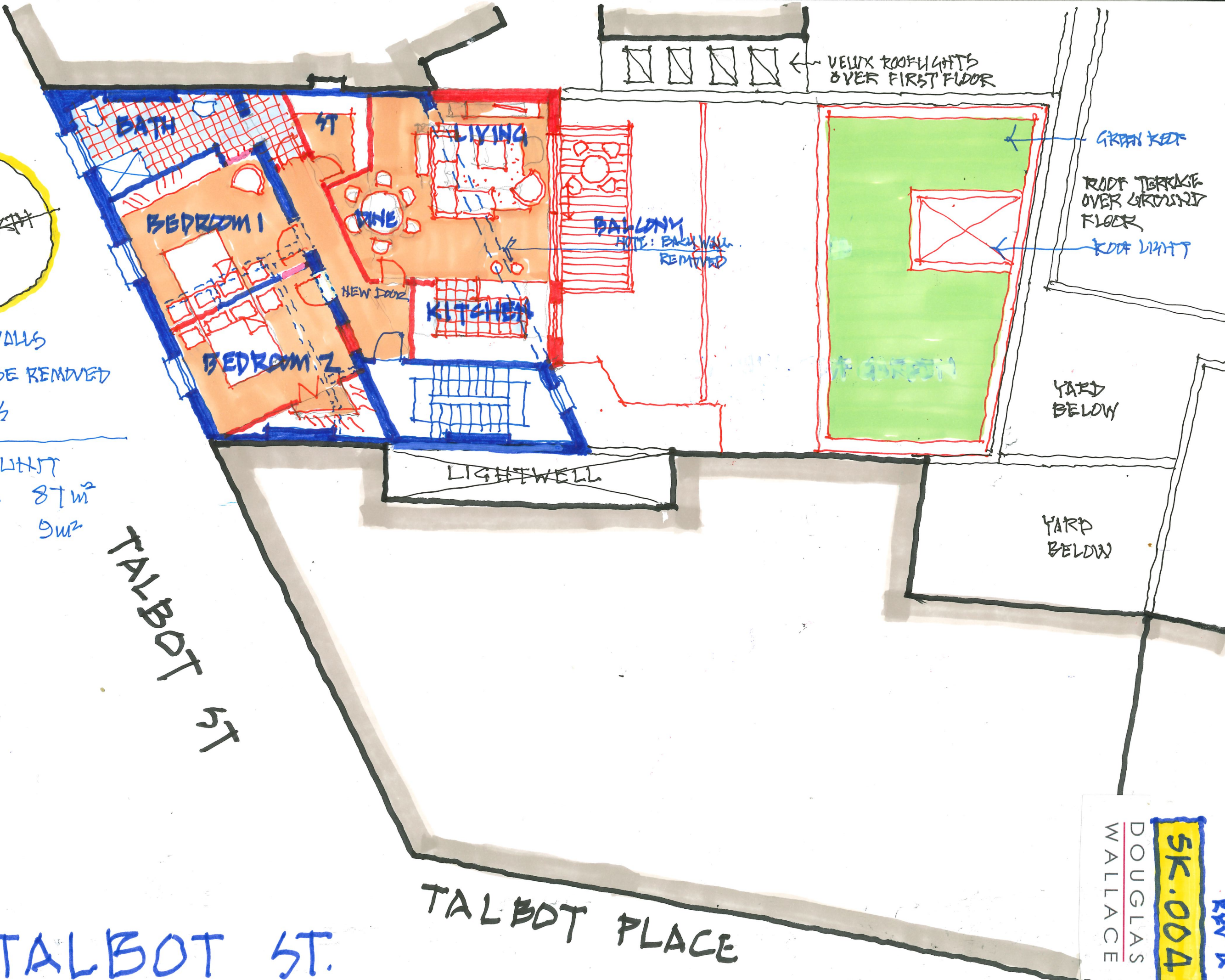


- EXISTING WALLS
- WALLS TO BE REMOVED
- NEW WALLS

2 BEDROOM UNIT  
 TOTAL AREA 87m<sup>2</sup>  
 + BALCONY 9m<sup>2</sup>



55/56 TALBOT ST.

TALBOT PLACE

DOUGLAS WALLACE

SK.004

REV A